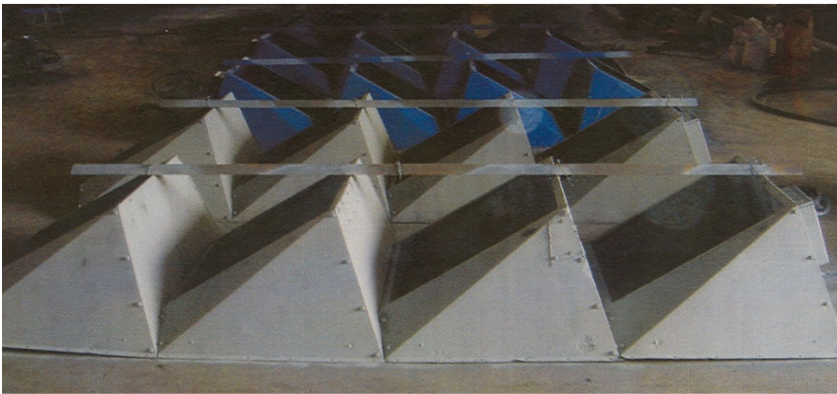
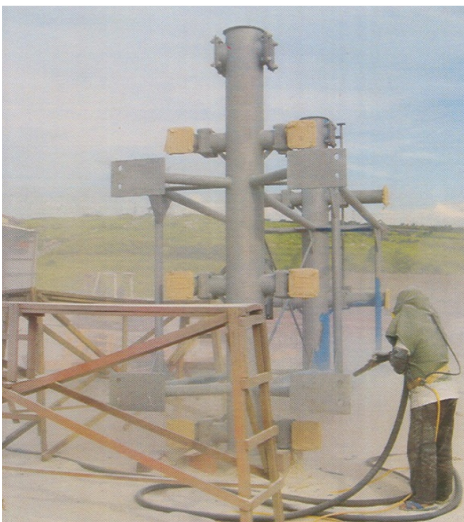


## POWER PLANTS - TAIWAN

500 KV Transformer Manifold  
(skeletal structure) : sandblast, **ZINGA** + local topcoats



500 KV transformer oil cooler.  
**ZINGA** + local topcoats



Diesel power air cooler: **ZINGA**



Diesel power overhead crane : **ZINGA**

Hydro power station :

A hydroelectric power station harnesses energy from moving water to generate electricity. While simple in concept, the process is highly efficient yet harmless to the environment. coated with **ZINGACERAM M** (no ZINGA)



Hydro Power station : gate rollers  
coated with **ZINGACERAM S** (no ZINGA)



Systems:  
ZINGA : 2 x 60  $\mu$ m DFT  
or  
ZINGACERAM